

Why Rayid?

the eyes are the window to the soul...

Unlike other esoteric readings, Rayid is a healing art that deeply and accurately identifies you as an individual. And what's more, Rayid provides you with powerful tools for physical and emotional self-healing to nurture your soul and its destiny.

You will discover the genetic origins of any illness or significant life event, learn how to heal it and bring light and love to yourself, your children and future generations.

You have the power to make a significant difference in your life, family and, ultimately, in the world. By applying the Rayid Model, you awaken new potentials and possibilities in your life.

By understanding the patterns in your iris, the influence of your birth order position, and the ever presence of ancestors, you are able to grow and evolve in remarkable ways.

3 PHASES TO YOUR SELF-EMPOWERED SPIRITUAL EVOLUTION

1. Identify your unique blueprint to your soul. Experience a Rayid consultation today – it will change your life!
2. Get your biochemistry right with a naturopathic treatment.
3. You can make it happen with powerful tools to heal and evolve.

WHAT YOUR IRIS SAYS ABOUT YOUR RELATIONSHIPS:

The iris provides insights into our relationships, enhancing depth, love and understanding. The awareness of complementary relationships or 'opposites attract' helps us learn from our partners as we move to achieve wholeness, and turn conflict into cooperation.

RAYID BEYOND THE IRIS

You can transform your fears, lessons and negative patterns into gifts to share with the world. The revolutionary Rayid Model goes beyond the iris and empowers you to obtain greater levels of inspiration, nurturing, peace, passion, clarity, harmony, love, prosperity, compassion, creativity, leadership and bliss.

Rayid Birth Order: Your birth order position determines your innate yin or yang energy. It also correlates with unique qualities and talents that evolve the family.

Rayid Family Tree Dynamics: Each grandparent, great-grandparent and so on, corresponds with 'universal qualities'. These qualities relate to special gifts and lessons infused within your family tree. Whether or not these ancestors are alive, their gifts and influence are ever-present.

Denny Johnson (the founder of Rayid) reminds us that "all information in the iris can be seen as a gift. All traits have positive attributes. They are not just problems to be coped with; they are pointers to how we can grow and change. They are there to facilitate a long-term evolution of consciousness".

For more information about consultations, classes, seminars and meditation retreats in Australia please visit www.jasoneldridge.com

CONTACTS:

VIC Jason Eldridge
66 Arden Street, North Melbourne
VIC 3051
Ph. +03 9328 1321
Email. naturopathic_care@dodo.com.au

ACT/NSW Prakash Snare
9 Pollock Street, Chifley
ACT 2606
Ph. +02 6284 2673
Email. prakashsnare@hotmail.com

Who are you?



RAYID IRIS – WINDOWS TO THE SOUL

WHAT DOES YOUR EYE REVEAL?

The iris is a unique blueprint to your soul. Unlock the secrets to your spiritual evolution.

Have yours read today!

Rayid

WHAT IRIS TYPE ARE YOU?

The iris has a vast amount of information that reveals your true nature & the lessons and gifts you have received from previous generations.

There are four main constitutional iris structures: 'Shaker', 'Flower', 'Jewels' or 'Streams'. Each describes personality and behavior.

Combination types are more common than single types, so you may be described as a 'Shaker Jewel' or a 'Stream Flower'. Personality is also modified by the presence of one or more iris 'rings'.

Rings of freedom are driven to pierce and break up imbalances in the world.

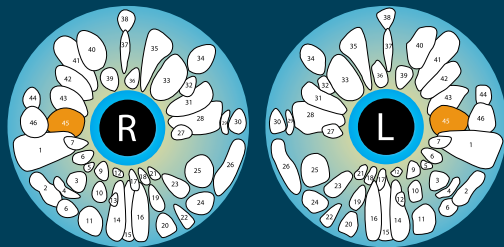
Rings of purpose have a sense of specialness; these people feel they have a mission to fulfil in life.

Rings of harmony these people tend to have high ideals about social and environmental issues.

Rings of determination usually appear in mature adults; they tend to act with a decisive certainty.

The particular arrangement of 'Jewels' or 'Flowers' in your iris not only uncover personality traits but may also reveal family issues.

The diagram below illustrates the complexity of what your iris reflects about your personality.

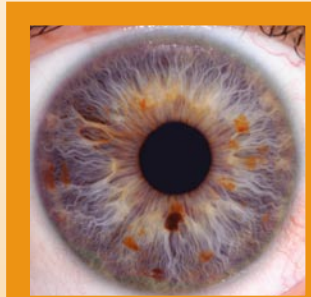


For example, position 45 shows inadequate expression of love between your parents or to you leading to idealism in relationships, wandering heart, commitment phobia. Transform this into a gift for beautiful lasting relationships, joy, expression of love and laughter.

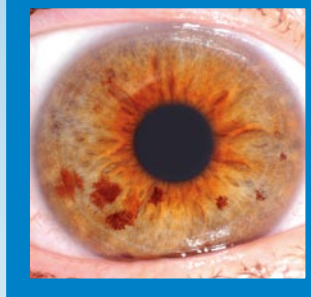
EXTREMIST TYPE *shakers*

Shaker personalities are innovative & dynamic: they change the world

- progressive & revolutionary
- at the forefront of change
- push the boundaries
- ungrounded with cycles of success & failure
- devoted to a cause & adventurous
- challenge life with abandon and zeal



excel as inventors, motivators and explorers
learn via experience, motion and intuition
need grounding, balance & equilibrium
attract Stream types for long-term relationships.

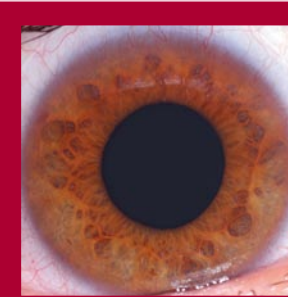


excel in leadership, teaching & science
learn visually & with emotional association
need to release, open, allow and feel
attract Flower types for long-term relationships

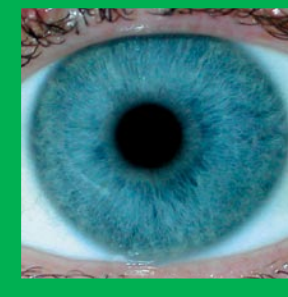
EMOTIONAL TYPE *flowers*

Flower personalities are sensitive & heart centred: they add feeling and excitability to the world

- passion, fire and grace
- flexible, spontaneous and changeable
- flow easily with social situations
- generate excitement and enjoy being on display
- experience feelings of anger, depression or blame
- visual communicators, animated and expressive



excel in creative abundance, as artists and engineers
learn auditorily
need to focus and control emotion
attract Jewel types in long-term relationships



excel in athletics, dance, health care & public service
learn by imitation & experience
need to expand, change, & move
attract Shaker types in long-term relationships

ANALYTICAL TYPE *jewels*

Jewel personalities are intellectual & focused: the world's great thinkers

- sharp, thought & analysis
- control themselves, situations & others
- lead with clarity & attention to detail
- precise verbal communicators
- often show little emotion
- intense, deliberate & quietly driven

GROUNDING TYPE *streams*

Stream personalities are the binding force that hold the world together

- physical yet very sensitive & empathetic
- nurture & balance others
- intuitive, connected and stable
- mediates & unifies extremes
- experiences feeling overwhelmed
- communicates with touch & movement